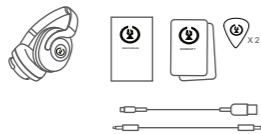


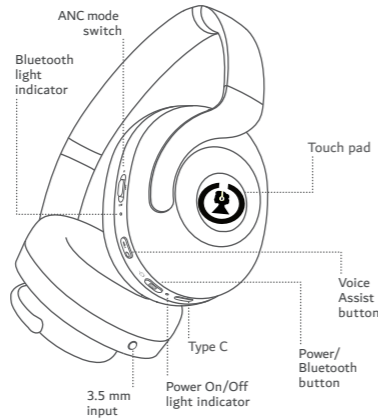
# 45's



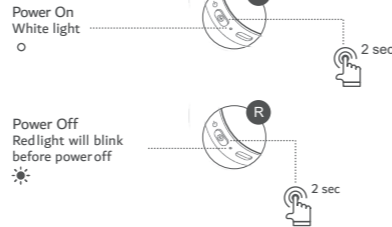
## What did I get ?



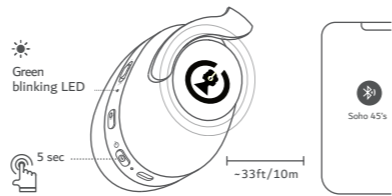
## The Soho Sound 45's



## ON/OFF

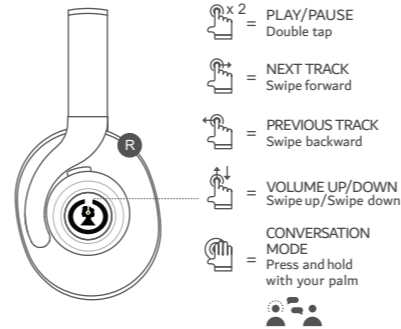


## PAIRING

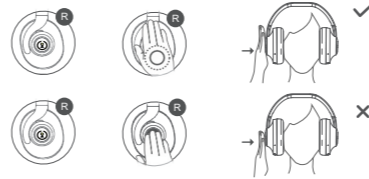


- Note:
- Pairing for the first time: Press and hold the power button for 2 seconds until the Bluetooth indicator flashes green
  - Connect a new device: When the product is powered off, press and hold the power button for 5 seconds until Bluetooth indicator flashes green.

## Sound Check

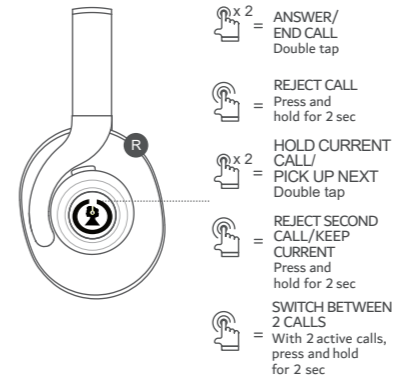


## Fancy a quick chat MODE

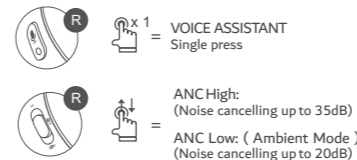


Note:  
Conversation mode is a convenient method to decrease your audio volume and give you full awareness of your surroundings. This allows you to have a quick conversation with someone or immediately be aware of your surroundings.

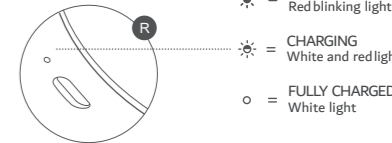
## CALLS



## VOICE ASSISTANT + ANC



## BATTERY INDICATION AND CHARGING



- Note:
- 40 hours of playback time with Active Noise Cancellation on and up to 60 hours with Active Noise Cancellation off.
  - 10 min charge provides around 3 hours of playback time
  - 45's can be fully charged in 3 hours

## AUDIO CABLE



Note:  
When the headphone is out of power, use the 3.5mm audio cable to connect your mobile phone with the headphone, to use the 45's as a wired headphones.

## SPECIFICATIONS

Model:	45's
Speaker size:	40mm
Audio decoding:	SBC
Frequency response range:	20-20kHz
Connection method:	Type-C charging cable
Bluetooth version:	BT 5.0
Bluetooth frequency:	2.402-2.480GHz
Battery specifications:	Rechargeable lithium ion battery 720 mAh
Charging time:	3 hours
Headphone playback time:	40H (ANC ON)/ 60H (ANC OFF)
Product weight:	263g/9.3 oz

## SAFETY AND HANDLING

- Do not use this device in dusty, humid, dirty environment or places near magnetic field.
- Keep an appropriate volume to avoid hearing damage.
- Do not use this device while driving.
- Keep the device away from heat sources like electric heaters, microwave ovens, stoves, water heaters, candles or any hot place.
- Do not use a hair dryer or microwave to dry the device.
- Please use the device and its accessories in 45°F~113°F/0°~45°. When the environmental temperature is too high or too low, it may cause device stop working.
- Keep the device and its accessories in a ventilated and cool place without direct sunlight.
- This device is not a toy, and children must use this device under adult supervision.
- This device and its accessories are not normal household garbage. Please deal with them according to the local laws and regulations.
- Headphone is designed to charge using standard USB voltage (5v +- 0,25v). It is not recommended to charge product using power supplies/sources with higher voltage.

## CUSTOMERS IN U.S.A.

NOTE: This equipment has been tested and found to comply with the limits for a Class B digital device, pursuant to part 15 of the FCC Rules. These limits are designed to provide reasonable protection against harmful interference in a residential installation. This equipment generates uses and can radiate radio frequency energy and, if not installed and used in accordance with the instructions, may cause harmful interference to radio communications. However, there is no guarantee that interference will not occur in a particular installation. If this equipment does cause harmful interference to radio or television reception, which can be determined by turning the equipment off and on, the user is encouraged to try to correct the interference by one or more of the following measures:

- Reorient or relocate the receiving antenna.
- Increase the separation between the equipment and receiver.
- Connect the equipment into an outlet on a circuit different from that to which the receiver is connected.
- Consult the dealer or an experienced radio/TV technician for help

Changes or modification not expressly approved by the party responsible for compliance could void the user's authority to operate the equipment. This device complies with Part 15 of the FCC Rules. Operation is subject to the following two conditions:

- ⌘ this device may not cause harmful interference
- ç this device must accept any interference received, including interference that may cause undesired operation.

## CUSTOMERS IN UK & EU

This device has been manufactured by or on behalf of SHENZHEN GRANDSUN ELECTRONIC CO., LTD. Hereby, SHENZHEN GRANDSUN ELECTRONIC CO., LTD. Declares that this device is in compliance with Directive 2014/53/EU

This symbol on the device, the battery or on the packaging indicates that the device and the battery shall not be treated as household waste. By ensuring these devices and batteries are disposed of correctly, you will help prevent potentially negative consequences for the environment and case of devices that for safety, performance or data integrity reasons require a permanent connection with an incorporated battery, this battery should be replaced by qualified service staff only. To ensure that the battery and the electrical and electronic device will be treated properly, hand over these devices at end-of-life to the applicable collection point for the recycling of electrical and electronic device. Hand the battery over to the applicable collection point for the recycling of waste batteries. For more detailed information about recycling of this device or battery, please contact your local Civic Office, your household waste disposal service or the dealer. This symbol is only valid in the European Union.

## TRADE MARKS

- The Bluetooth® word mark and logos are registered trademarks owned by Bluetooth SIG, Inc. And any use of such marks by SHENZHEN GRANDSUN ELECTRONIC CO., LTD. is under license.
- "Soho Sound Company" a trading name of "Soho Sound System Limited" word, marks and logos are registered trademarks of Soho Sound Systems Limited. Reproduction in whole or without written permission is prohibited. Other companies and products mentioned herein are trademarks of their respective owners.

Imagined in London - Made in China

## Soho Sound Company WARRANTY

- The device is guaranteed for 12 months from the date of purchase. Repair and maintenance service are free during period.
- The warranty limitation:
  - a, Man-made damage; Wear and Tear
  - b, Beyond the Warranty period;
  - c, Accessories damage due to improper use and maintenance;
  - d, Disassemble the device without manufacturer authority;
- Service Information  
Soho Sound Co. Website: [WWW.sohosoundcompany.COM](http://WWW.sohosoundcompany.COM)

# Thank you very much...

